

# UROLOGY

University of Arizona | Department of Surgery | Division of Urology

SPRING 2017/ ISSUE 1/ VOLUME 1



# The match results are out...

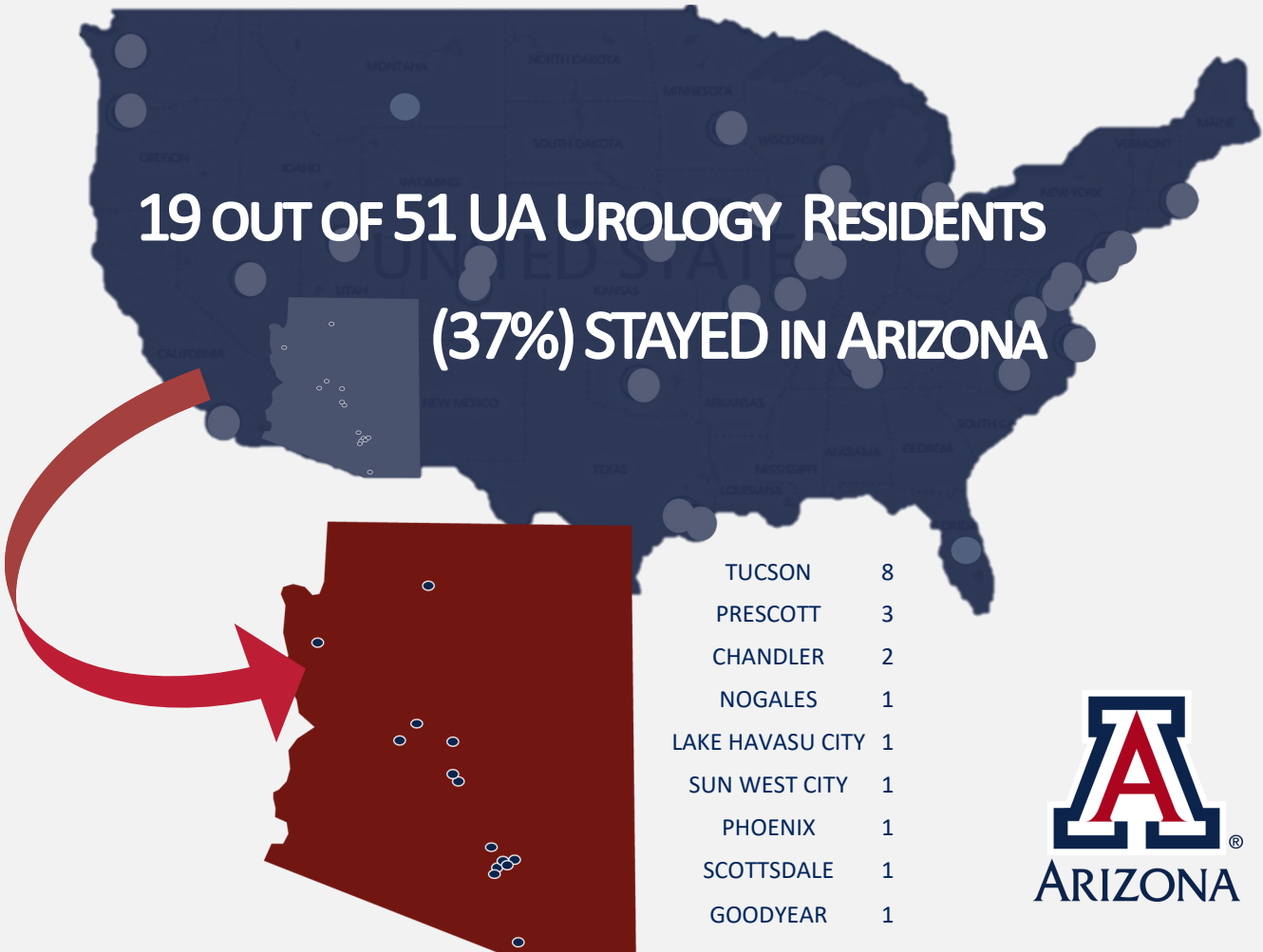


The **2017 Urology Residency Match** is now complete. We welcome *Cameron Hinkel* and *Grant Pollack* as our 2017 AUA Urology Residents. We were fortunate to match Hinkel and Pollack, with 422 applicants for 319 spots, it was a very competitive process. In fact, 103 highly qualified Medical students who applied for Urology did not match. We are opening a 1 year research position in Urology to extend to a medical student who did not match who would like to bolster their resume and reapply next year.

## OUR RESIDENTS

We proudly train urology residents from all over the nation

19 OUT OF 51 UA UROLOGY RESIDENTS  
(37%) STAYED IN ARIZONA



TUCSON	8
PRESCOTT	3
CHANDLER	2
NOGALES	1
LAKE HAVASU CITY	1
SUN WEST CITY	1
PHOENIX	1
SCOTTSDALE	1
GOODYEAR	1



# MESSAGE FROM THE CHIEF



Greetings from the division of Urology at the University of Arizona. We are excited to share our new developments over the past year on the latest clinical and research news. From an expanded clinical initiative to our Fusion MRI-targeted prostate biopsy program to growth in robotic partial nephrectomy for high risk disease to development of a new technique for autologous sling for pelvic prolapse, I am proud of the innovative, pioneering spirit of our faculty.

Education is also an important part of our mission, and we reflect that ~ 40% of our graduates of our residency program have stayed within the state of Arizona to provide excellent urologic care right here at home.

We look forward inviting you to the George Drach Distinguished Visiting Professorship featuring Dr. Stephen Y. Nakada, Chair, Department of Urology, University of Wisconsin, March 21-22, 2017 in Kiewit Auditorium, with his presentation on “Coping with Stone: Medical Management and QOL measures” as well as challenging cases presented by the residents to the VP.

Finally we look forward to restarting the Tucson Urological Society at Hacienda del Sol on April 20, 2017 with complex Urologic case presentations with the community to collaborate on treatment options. We look forward to renewing friendships and beginning new ones.

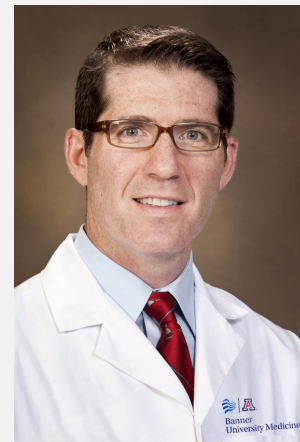


Benjamin R. Lee, MD  
*Professor and Chief, Urology*  
*brlee@surgery.arizona.edu*  
**University of Arizona | College of Medicine**

# ▶▶▶ URETHROPLASTY

Matthew Gretzer, M.D. | Associate Professor of Surgery

Our GU reconstruction center at the University of Arizona remains very active. To date we have completed over 400 urethroplasties, and could not have achieved this milestone without the support of the urologic community throughout Arizona. As the database matures we plan to identify epidemiological and clinical variables that will assist in future diagnosis, management, and outcomes. Available followup ranges from 1-6 years following reconstruction and patency rates remain durable above 90% following one repair without need for intervention. While most primary repairs do well without requiring revision, we have performed local island skin flap and extended buccal grafting for complex cases and revisions.

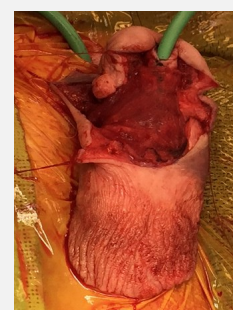
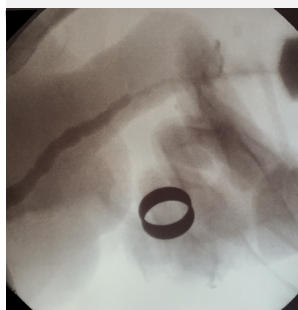


We continue to see men with a history of both failed hypospadias and Lichen Sclerosus. The attached images represent one of these complex repairs utilizing a staged repair. The retrograde study shows the stricture involving the majority of the penile urethra. Following stage one placement of the buccal graft, the new urethra is tubularized with coverage provided by the local dartos fascia and penile skin. At 1 year he is voiding well and has not required any intervention.

We have also maintained robust clinical activity in all aspects of GU prosthetics and have recently participated in a multi-center study investigating the outcomes of artificial urinary sphincters in men undergoing radiation therapy before and/or after implantation. Stay tuned as this data is presented at future meetings.

In addition to urethral reconstruction, we have now performed numerous buried penis reconstructive surgeries. These are the men that have undergone numerous “revision circumcisions” only to see further regression of the penis. During the procedure we perform a panniculectomy of the suprapubic fat pad with penile pubic fixation and subsequent split thickness skin grafting to the exhumed penis. Without a doubt the men are thrilled to be voiding once again in the standing position.

Future investigations are underway to identify novel follow-up modalities for men undergoing urethral reconstruction, as well as collaboration with our trauma service to investigate management and outcomes of GU trauma.



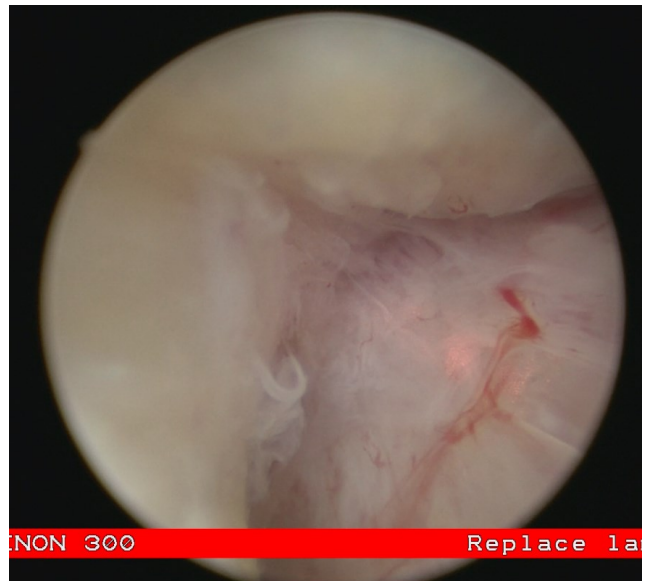


## PRECISION MEDICINE INVESTIGATION

Ken Batai, PhD. & Elinora Price

With a relatively high percentage of Hispanic/Latinos and Native Americans, Arizona's racial and ethnic makeup presents unique considerations for precision medicine investigations into urologic cancer. As our recent research reveals, the incidence of urologic cancers (prostate, bladder, and kidney/renal pelvis) and mortality from them can vary significantly among the racial/ethnic groups in the U.S. Native Americans and Hispanic/Latinos in four U.S.-Mexico border states (Arizona, New Mexico, Texas, and California) show a heavier kidney cancer burden compared to non-Hispanic Whites. The heavy burden of kidney cancer in Native Americans is well documented, but interestingly, not in the Hispanic/Latinos population on a national level. In these four border states, these minority groups also show disparity in prostate cancer, with a higher incidence rate of distant metastatic prostate cancer compared to non-Hispanic Whites. These differences indicate there may be underlying genetic, behavioral and/or social factors influencing these cancer rates.

Hispanic/Latinos and Native American groups are under-represented in many cancer studies, especially those in precision medicine studies examining the molecular and genetic underpinnings of urologic cancer. We have submitted these findings to the American Urological Association and the Arizona Cancer Center for presentation. The Division of Urology is currently pursuing further research to examine the many factors affecting urologic cancer among our patients, in order to better serve our diverse patient population.



## HoLEP REPORT

Joel Funk, M.D. & Michael Phung M.D.

We are currently in the process of several exciting research developments in the world of Holmium Laser Enucleation of the Prostate (HoLEP). Currently this includes a retrospective review of the incidental cancer detection rate with HoLEP and thus far, a review of over 100 patients has revealed a cancer detection rate of 7.8%; published literature has reported rates of 5-12%. Other current studies in development include outcomes review of ambulatory surgery, and we have submitted a \$10,000 grant proposal with the hopes of starting an ambitious pilot study in coordination with our Pathology and basic science colleagues. If this study proceeds, we may be able to identify genetic and pathologic markers for progression of BPH and allow for earlier intervention in men at risk.

## CONGRATULATIONS

*Dr. Mike Siroky* has been selected as a recipient of the 2017 AUA Presidential Citation for a career dedicated to the understanding and advancement of the field of neurourology.

We are honored to have you as part of our team!

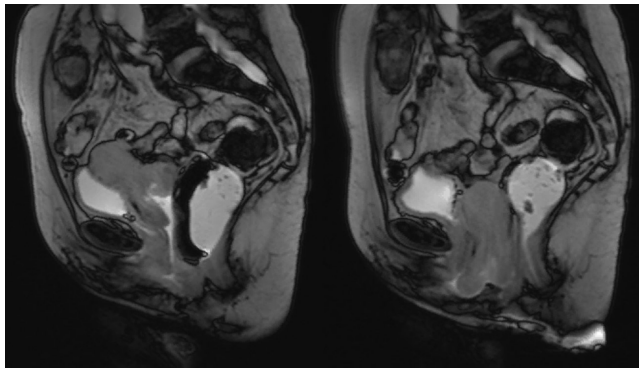
# FEMALE PELVIC MEDICINE & RECONSTRUCTIVE SURGERY

Christian Twiss, M.D. | Associate Professor of Surgery



Our division hosts a variety of projects within the subspecialty of Female Pelvic Medicine and Reconstructive Surgery. Previous experience has focused on optimal management for workup and removal of vaginal mesh implants. Our doctors focus efforts in collaborative research to understand the etiology of mesh-related pain and improve patient-centered outcomes of mesh removal. New surgical techniques have been developed to help women who suffer from recurrent pelvic organ prolapse and urinary incontinence. We developed a new method of pelvic organ prolapse repair, which utilizes the patient's own tissue; we collaborate with our medical imaging colleagues to study the use of dynamic pelvic MRI in the diagnosis of pelvic organ prolapse. We are at the forefront of research, to illuminate pathways to better understand Female

Pelvic Medicine and Reconstruction, to further develop methods to provide high quality care and sustained comfort to patients.



## TUCSON UROLOGICAL SOCIETY PRESENTS

**“Complex Urologic Case Discussions: How would you treat this patient?”**

Hacienda del Sol Guest  
North Dining Room  
5501 N. Hacienda Del Sol  
April 20<sup>th</sup>, 2017 | 6:00 p.m.

**Dinner of choice:**

Sous Vide Half Chicken | Ancient Barley Risotto | Braised Pork

Please send RSVP with dinner selection by 4/1/2017 to Melody Hoopes:

(520) 626-2016 or [mlhoopes@surgery.arizona.edu](mailto:mlhoopes@surgery.arizona.edu)

*Sponsored by an Educational Grant from Cook Medical*

**ANNUAL  
GEORGE W. DRACH, M.D.  
DISTINGUISHED VISITING PROFESSORSHIP  
IN UROLOGY**



**Stephen Y. Nakada, MD**  
*Chair, Department of Urology  
University of Wisconsin  
School of Medicine and Public Health*  
**March 21-22, 2017**

**SCHEDULE**

**Tuesday, March 21, 2017**

6:00-8:00 p.m.

Hacienda del Sol, Casa Luna  
5501 N. Hacienda del Sol Rd.

**Dinner and Lecture**

“Surgical Management of Stones: Latest Updates in 2017”

**Wednesday, March 22, 2017**

7:00-7:45 a.m.

UA Cancer Center, Kiewit Auditorium, Room 2951

**Grand Rounds Lecture**

“Coping with Stones: Medical Management and QOL measures”

7:45-8:00 a.m.

**Q & A**

8:00-8:45 a.m.

UA Cancer Center, Kiewit Auditorium, Room 2951

**Lecture**

“How to Succeed in Academic Urology: 3 Key Steps”

8:45-9:00 a.m.

**Q & A**

9:00-10:30 a.m.

UA Cancer Center, Kiewit Auditorium, Room 2951

**Resident Case Presentation**

11:00 a.m.-12:00 p.m.

UA College of Medicine Room 5406

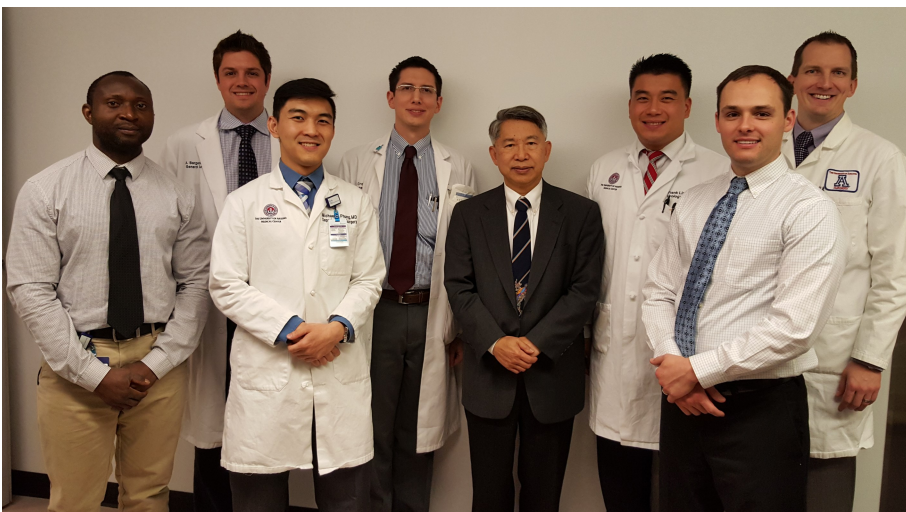
**Lunch with Residents**

**RSVP by Thursday, March 16, 2017 to**

Rosemary Balderrama

520-626-6895

rosemary@surgery.arizona.edu



**VISITING PROFESSORSHIP  
2016  
Dr. Tom Lue**

**Pictured (L to R):**

Dr. Sylvester Onyishi, Dr. Andrew Bergersen, Dr. Michael Phung, Dr. Miguel Craig, Dr. Tom Lue, Dr. Frank Lin, Dr. John Michalak, Dr. Chris Brown.



THE UNIVERSITY OF ARIZONA HEALTH SCIENCES  
DIVISION OF UROLOGY  
PO BOX 245077  
TUCSON AZ 85724-5077

